

Design, Fabrication and analysis of Bladeless fan with Thermoelectric Peltier Cooler

Ravina Punde¹, Vinayak Sanjay Dakre²

¹ Student, II year M. Tech. (Thermal Engineering), Dept. of Mechanical Engineering, G H Raison University, Amravati

² Assistant Professor, Dept. of Mechanical Engineering, G H Raison University, Amravati
(vinayak.dakre@ghru.edu.in)

Abstract – Nowadays, Bladeless fan are gaining popularly due to its unique design look. It has much more advantages over the traditional fans. It won't hurt the children's fingers for it has no blades and it is easy to clean up. For the present study, a bladeless fan was fabricated with four peltier at bottom for cooling. Its outer casing is of mild steel; its bottom casing is of aluminum for better cooling's. A HC-05 Bluetooth module (based on Android application) is used to control and regulate the bladeless fan.

Airflow analysis of the project is done on Ansys Fluent to determine the velocity of air at various distances.

Key Words: Bladeless fan, TEC, Sheet Metal Manufacturing, HC-05 Bluetooth module.

1. INTRODUCTION

In the present study, a bladeless fan was designed with sheet metal using Autodesk Inventor and constructed by the combination of laser cutting, rolling, taper rolling, and welding. Since it is not made up of 3D printing material it is cost-effective and because of its compactness, it is portable in a domestic setting.

In October 2009, James Dyson's consumer electronics company, famous for its line of vacuum cleaners, introduced a new device to the market called the Dyson Air Multiplier.

The Air Multiplier is a fan with an unusual characteristic: It doesn't have any visible blades. It appears to be a circular tube mounted on a pedestal. The shallow tube is only a few inches deep. Looking at the device, you wouldn't expect to feel a breeze coming from the mounted circle. There are no moving parts in sight. But if the fan is switched on, you'll feel air blowing through the tube. How does it work? How can an open circle push air into a breeze without fan blades?

As you might imagine, there are a few scientific principles at play here. There's also an electronic element. While the tube doesn't have any blades inside it, the pedestal of the fan contains a brushless electric motor that takes in air and feeds it into the circular tube. Air flows along the inside of the device until it reaches a slit inside the tube. This provides the basic airflow that creates the breeze you'd feel if you stood in front of the fan. According to Dyson, the breeze generated by the Air Multiplier is more consistent and steady than one from a standard fan with blades. Since there are no rotating blades, the breeze from the fan doesn't buffet you with short gusts of air.

Making use of these laws, Dyson claims that the output of airflow is increased 15 times more than that taken in



through the pedestal's motor, thus the name: air multiplier. The result is a filled cylinder of air flowing smoothly without the choppiness of traditional fans. The price range may be a little beyond the normal price for a fan and some users have claimed that it can be rather noisy, but the Dyson Air Multiplier provides an eye-pleasing, low power consuming fan that is safe to use around young children due to the lack of accessible rotating blades. In this project, the TEC modules are used to cool the air which is sucked in, the cool air is then forcibly passed through the hoop and to the observer. The air is not only multiplied but also cooled before it reaches the observer.

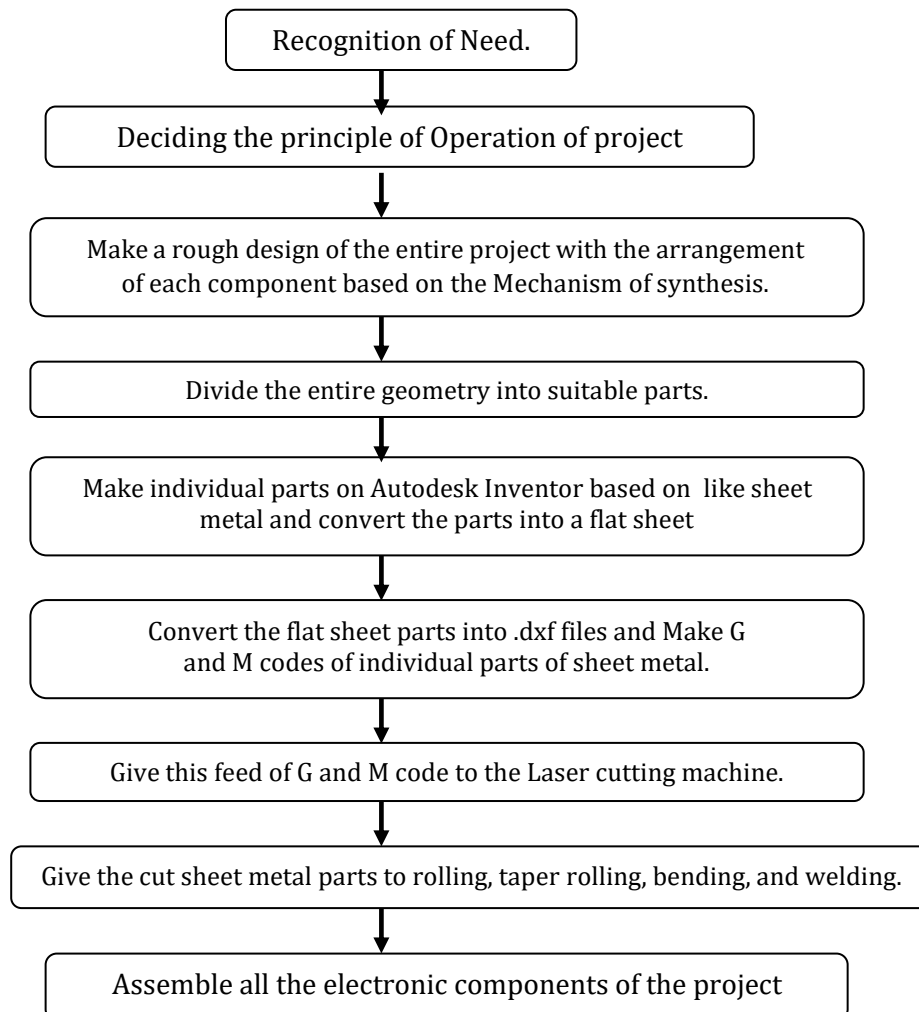
OBJECTIVES

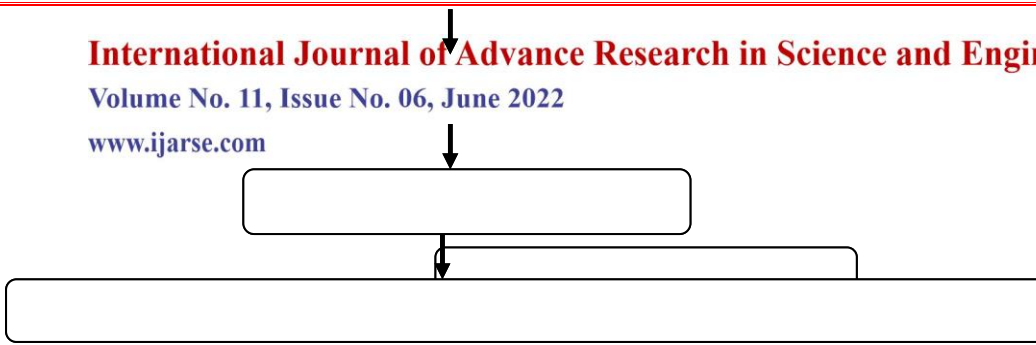
The objectives of present work are:

- To design a bladeless fan that lowers the temperature of the air.
- To design a compact fan with added electronic features for domestic purposes.
- To determine the energy parameters and to test the overall energy savings in the fan concerning traditional axial fan.
- The objective of the project is to make a fan that will be used in places where space is limited.

2. METHODOLOGY

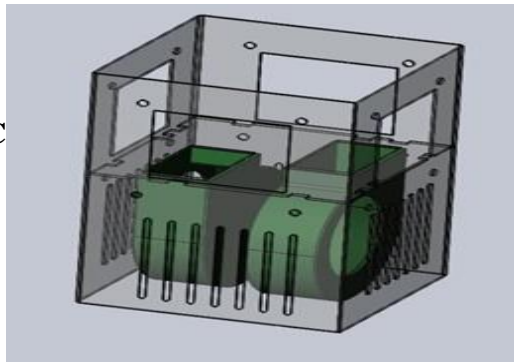
The overall Methodology of our project can be summarized in the form of following flow chart:





Test and validate the results.

3. FABRIC



shape for a given set of conditions.

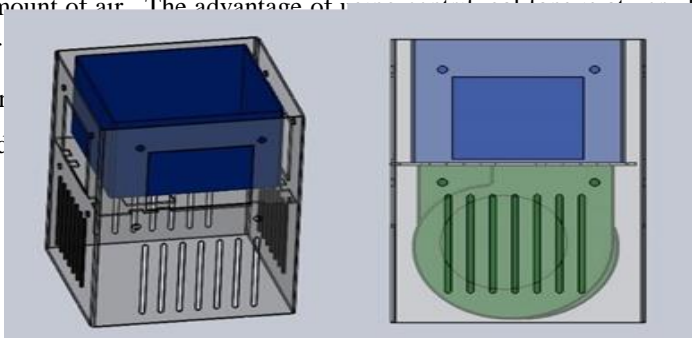
ONENTS

Fig -1: Centrifugal fan(green) assembly at the bottom with the main base.

3.1 Main Frame

At the main base frame, two centrifugal fans are placed for proper suction of air into the fan. For suction of the air, vertical vents are provided at four sides to suck the air into the fan. The trial was taken to use only one centrifugal fan, but since the velocity of air observed was less hence two centrifugal fans are used, to suck more amount of air. The advantage of using two fans is that in a little volume they suck the maximum amount

of
far
sic



base to suck the air, however, a centrifugal fans are placed side by side with their suction

S.

Fig-2: Cold Chamber Box(blue) mounted on the main base with centrifugal fan(green).

The air after suction from the bottom part then moves over the aluminum box (shown in blue) placed above it.

The outlet of centrifugal fans is covered with an aluminum plate. This aluminum box act as the cold chamber of the project. Each of the four vertical sides of the aluminum box is in physical contact with the cold sides of the four Peltier modules used. Aluminium box is used as a material other than Mild steel because of its high thermal conductivity (thermal conductivity of aluminum box, $k= 205\text{W/mK}$). Materials with high thermal conductivity have very little resistance and obtain heat very quickly as a result heat can pass easily through them. Aluminum thermal conductivity is lesser than copper, but aluminum being cheap it is used as a cold chamber. (Thermal conductivity of copper box, $k=385\text{W/mK}$). The heat is conducted evenly from the four vertical sides of the cold chamber box, which is removed by the cold side of the Peltier module. The air sucked by the centrifugal fan below it comes in contact with the sides of the cold chamber box and thus air leaves with lowering its temperature.

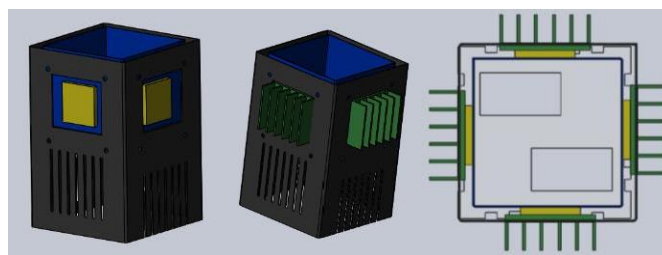


Fig-3: Main base attached with Peltier Module (Yellow) and fins (green).

The rectangular spaces provided in the main base are used for connection Peltier modules (as shown in yellow). The Peltier modules with cold sides are connected to the aluminum box. For proper adherence of the Peltier module to the aluminum box, thermal pastes are applied. The hot side of the aluminum box is connected to the heat sinks (as shown in green), again for proper adherence thermal paste is applied. Heat sink connected dissipate away the heat liberated from the hot side to the atmosphere. The heat sink is connected externally by the axial flow heat sink fans (as shown in red) using a nut and bolt assembly.

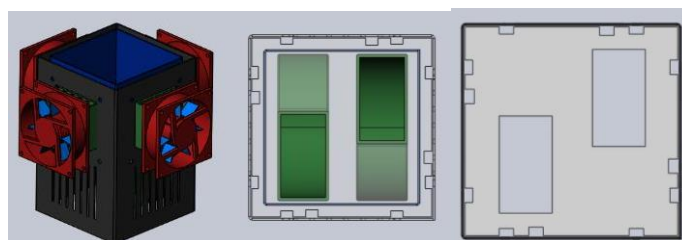


Fig 4- Main base with axial flow fans, top view of the main base, and cover of aluminum box

When the air is passed through the cold chamber, it is passed over the circular hoop on the top. The hoop design should involve aerodynamics to entrain, induce, and thus multiply the sucked air. The hoop design must be 3D printed and must be analyzed for various shapes for good multiplication of air.

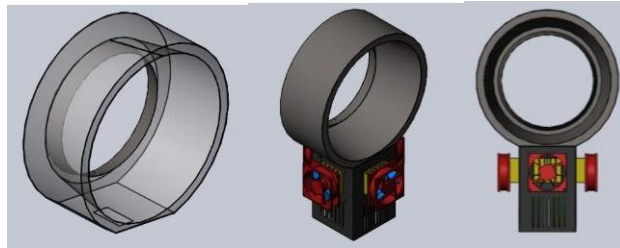


Fig-5: Hoop of the fan, hoop with assembly

A trial model was made of a hoop of 26cm diameter, it was given converted into STL format and the mass of the hoop was checked with ABS and PLA material, the mass of the hoop with PLA is 908g with 30% infill and mass of the hoop with ABS is 926g with 30% infill. In the 3D printing process, the objects given for printing are generally crosshatched or uses other patterns for interior surfaces and some space in the print remains empty, to completely fill the space infill percentage is increased. With 100% infill the mass of the product was 1100g for PLA and 1198g for ABS materials. The cost of ABS and PLA is Rs 16/g and Rs 9/g , the total cost Rs17,600 and Rs9,900, moreover the printing time was 42 hours. Hence FDM method of manufacturing was discarded because of cost and time of manufacturing. Hence, sheet metal cutting is used for manufacturing rather than FDM.

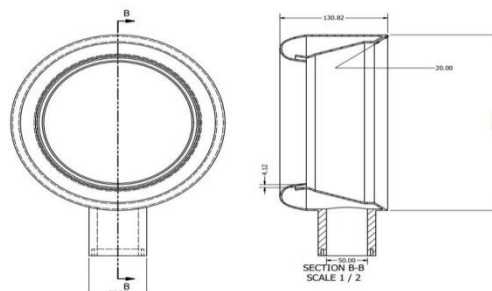
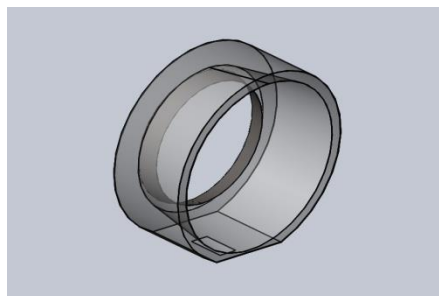


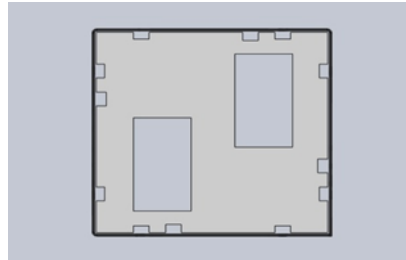
Fig-6: Sheet front and sectional side view of test model made for 3D printing

3.2 COMPONENTS

1. Circular frame: Circular frame is made of mild steel of thickness 1mm. First the laser cutting is done on the sheet. After that rolling operation is carried out and the sheet is welded.



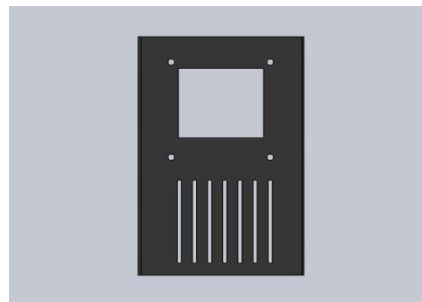
2. Bottom frame: Bottom frame is made of mild steel of thickness 1mm. First the laser cutting is done on the sheet. After that bending operation is carried out and welding is done.



3. Aluminum Box: Aluminum box is of thickness 1.5mm. First laser cutting is carried out and bending operation is done.



4. Fan mount: Fan mount is of mild steel of 1mm. First laser cutting is carried out and after that spot welding is done



5. Thermoelectric Peltier Cooler 12 Volt: Thermoelectric coolers can be used to cool computer components to keep temperatures within design limits or to maintain stable functioning when overclocking. A Peltier cooler with a heat sink or waterblock can cool a chip to well below ambient temperature. Peltier modules are electronic devices designed for cooling objects to below the ambient temperature or maintaining objects at a specific temperature by controlled heating or cooling.



6. Dc Centrifugal fan: A DC centrifugal fan is a mechanical device with rotating impellers from which it draws kinetic energy to push out the air in a particular direction. It has a housing or an enclosure which helps

maintain the direction of the outgoing air or gas. Centrifugal fans use the kinetic energy of the impellers to increase the volume of the air stream, which in turn moves against the resistance caused by ducts, dampers and other components. Centrifugal fans displace air radially, changing the direction (typically by 90°) of the airflow. They are sturdy, quiet, reliable, and capable of operating over a wide range of conditions. Centrifugal fans are constant-displacement or constant-volume devices, meaning that, at a constant fan speed, a centrifugal fan moves a relatively constant volume of air rather than a constant mass. This means that the air velocity in a system is fixed even though the mass flow rate through the fan is not.



7. 12V Exhaust DC Motor: DC fans are widely regarded as the most efficient type of fans. They consume significantly less power than AC fans. In fact, DC fans consume up to 70 percent less energy to produce the same output as traditional AC fan types

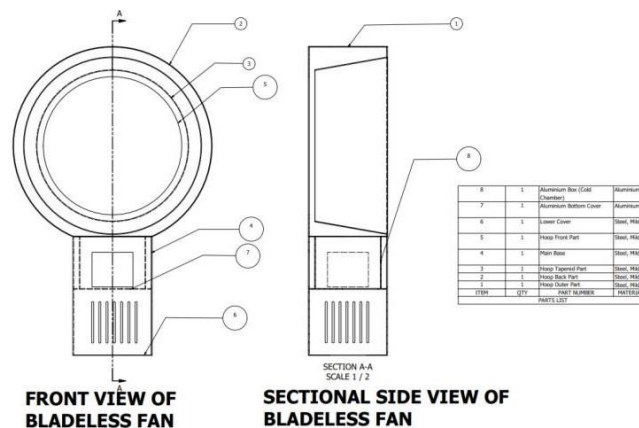


Fig-7: Sheet assembly of different components

The output of the centrifugal fan was considered which is 54mm x 29mm keeping two centrifugal fans with proper assembly, the main base dimension is square with side as 120mm, the height is kept as 180mm. At the Main Base, the dimension of the Peltier modules was measured and the proper hole is drilled. For suction of air 6 vertical vents of 60mm x 4mm on each face are made by slots. Sufficient space is kept for the aluminum box. The outer diameter of the Hoop is considered 30cm. Hoop Side Part is with 120mm width and radius as 150 mm a slot is made with 54mm x 29mm for the Centrifugal fan inlet. Hoop Back Part is with 150mm outer radius and an inner radius of 135mm. Hoop outer circle is going to mate with the Hoop Side Part Hoop. The Front Part is with 150mm diameter and 105mm inner radius. Hoop Front Part is going to mate with Hoop Side Part. The lower cover is a square with a 120mm side length with a circular hole of 15 diameters. Hoop Tapered

Part is of inner radius 231.21mm and outer radius as 269mm the taper angle is 100. The Hoop Tapered Part is mate with the Hoop Back Part. The flat portion of the Hoop Side Part is mate with the Main Base. Aluminum Box dimension is taken as 120mm width and 117mm height.

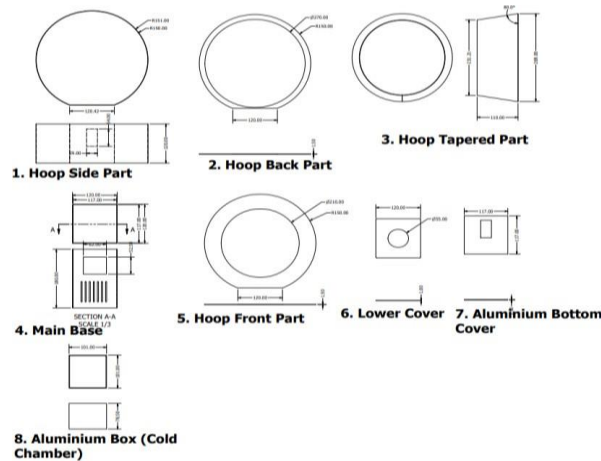


Fig-8: Sheet parts of different components with dimensions.

3.3 Scaling the Standardized Airfoil.

The dimensions of all other components were done by first selecting the size of the cross section of airfoil. For this purpose a standardized airfoil is referred to avoid the problem faced due to accumulation of air inside the hoop. If the size of airfoil is too large then accumulation of mass takes place within the airfoil, which releases air with very less velocity, whereas if the size of the airfoil is less then there is more shear stress developed due to moving fluid across the thickness of airfoil. Hence appropriate length and height selection of the cross section of airfoil is necessary for efficient release of air.

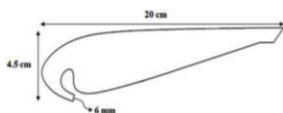


Fig-9: Dimension of

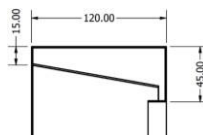


Fig-10: Airfoil cross-sectional Cross Section of airfoil with dimension.

The shown airfoil is taken from “Numerical Investigation of 60cm diameter airfoil”. This airfoil is for 60cm diameter of fan, we fix our diameter of fan as 26 cm. Scaling it appropriately and increasing the length of the airfoil by 2 cm we get the length as 12 cm and height as 2cm. Length 12cm is not scaled because the dimension of the Main Base below it is 12cm which will mate with the hoop. Thus all the dimensions of the components is decided.

The components are modeled based on dimension on Autodesk Inventor. The model is designed with thickness as 1mm. After modelling the individual components on Autodesk Inventor, the components are tried to assemble.

After assembly the individual components are again opened and converted into sheet metal. The Hoop Tapered Part is applied with rip command and converted into flat pattern and saved. Similarly, Hoop Side Part and Main Base is converted into flat pattern and saved. Thus sheet metal components are converted into flat pattern.

3.4 Laser Cutting Parameters.

Once the flat pattern parts are saved the parts are converted into .dxf file format. These are 2D files, which can be read and understood by the CNC laser cutting machine. The sheet metal used is Mild Steel with 1mm thickness. Laser beam machining is carried out in two parts i.e piercing and cutting.

Table -1: Parameters of Laser Cutting

Piercing.	Cutting.
height=1.5mm	height=0.6mm
time=200ms	speed= 10m/min [H]
Voltage= 1500V	Voltage =1500V
Frequency=1000Hz	Frequency=5000Hz
Duty =30%	Duty =100%
Pressure=8bar	Pressure=2.5bar
Gas type: Oxygen	Gas type: Oxygen
Focus=2mm	Focus=1mm

3.5 Rolling, Taper Rolling Bending and Welding of Sheet Metal Cut.

The Sheet metal is cut based on the various shape which is input to the laser cutting machine. The cut sheet is further processed in the rolling, taper rolling and bending machine to get the shape designed in the CAD file and then finally welded to get the complete structure. Hoop Side Part is first sent for rolling to get the desired radius rolling and welded. Hoop Tapered Part is sent for tapered rolling and then welded. Main Base is sent to bending operation to bend each edge at right angles and then welded. Here uniform pressure is applied across the sheet metal to get equal radius at each end.

3.5.1 Rolling.

In this process there are two driving rolls and an adjustable roller. The Hoop Side Part which is cut in the laser cutting is fed to the rolling machine lengthwise. The sheet metal moves in between these rollers at speed from 0.3m/s to 1.5m/s. The machine is manually fed with radius specified as 150mm. The sheet is moved back and forth many times until a required shape is obtained.

3.5.2 Tapered Rolling.

In this process unlike the rolling operations the driving rollers are not parallel, one roller is placed at the top one at the bottom and two rollers placed side by side. Hoop Tapered Part which is laser cut is fed between these rollers. Pinching is first done on the sheet metal, it is noted that the minor diameter of the cone is slightly loose

than the major diameter of the cone. Pre-bending on first edge side roll is tilted up, it is achieved after rotating the rolls. Similar way pre-bending is done on the second edge. The sheet is repositioned at the centre point and both the side rolls are raised and tilt up at equal positions. The bending process is repeated by moving the sheet in between the rolls back and forth many times until a proper shaped tapered sheet is formed. Welding operation is performed and the calibration is performed.

3.5.3 Welding.

For joining all the sheet metal after rolling gas metal inert gas welding is used. At the beginning individual components are welded then each component is welded to another one. Hoop Back Part is welded to the Hoop Outer Part and the Hoop Tapered Part, Hoop Back Part is also welded to the Hoop Side Part, Hoop Side Part is welded to the Hoop Front Part, Hoop Side Part is welded to the Main Base. The electrode used in the form of wire tool. The arc is shielded by an inert gas atmosphere provided by the gas flowing through the nozzle of the holder through which the electrode wire also passes. The welding equipment consists of a pistol shaped welding gun, a gas hose with a concentric metallic for conveying filler wire, control cables, wire feed system, wire reel, welding power source and the inert gas cylinder. The consumable electrode wire and the shielding inert gas are fed through the barrel of the welding gun and a switch in the handle starts and stops the wire feed and flow of gas. The electrode wire is drawn from the wire reel by motor driven feed rolls and forced through the filler wire and gas conductor. The feed rolls are driven by a variable speed motor through suitable reduction gearing. The welding arc is controlled by the current setting, the speed of the wire feed, and the characteristics of the welding source. Once established the wire feed rate is constant. Thus in manual metal inert gas welding the arc tends to be self-regulating. To start welding the trigger switch is depressed. This produces sound weld at high speeds. Since carbon dioxide decomposes into carbon monoxide and oxygen at high temperatures deoxidizers such as aluminum or silicon are to be used when using carbon dioxide. DC polarity is used without any need of filler metal.



Fig-10: Hoop, Main Base, Aluminum Box after sheet metal cutting

The Hoop after laser cutting is assembled using welding, main base and aluminum box is bolted. The Aluminum Cover is attached with the centrifugal fan using brackets which are welded to it using Arc Welding. Arc Welding is used for mounting the brackets on aluminum because the thermal conductivity of aluminum is very higher than as a result of it the heat affected zone is more when we use the CO₂ welding as a result of it is not suitable for it.



3.5.4 Paint.

After the Assembly of the component is done it is painted. The paint used is acrylic paint. Dust and other particles are removed with a moist rag. Since the outer portion is to be painted it is cleaned properly with sandpaper. The rust from the metal surface is removed. The metal outer surface is sand and smooth in order for the spray paint to turn out well. The Main Base is covered with paper or the immediate contact surface with a tape. Then upper hoop is applied with a primer to ensure the final paint job is smooth and even. The gray color paint is applied on the hoop and black is applied on the Main Base

3.6 Electrical Circuit.

3.6 .1 Electrical Components

The assembled Hoop with Main Base and Aluminum Box is then assembled with Peltier module. The cold side of the Peltier module is matted to the aluminum box through the slot left in the main base. Peltier module with written TEC- 12706 is the cold side. The fins are in contact to the hot side. In between the connection with the Peltier module with the metal a thermal paste is used. Thermal paste ensures the proper dissipation of heat between two surface and there are no irregularities which form thermal resistance. In order to increase the heat transfer rate, the hot side is joined to the fans. The fans with their suction at the outer side are used. The fan is assembled to the fins using a screw joint. Thus, electric components are mounted on the bladeless fan.

3.6 .2 Electrical Connection Connection.

The electrical part consists of the following components:

1. Heat Sink Fans (Model BS10033812U)
2. Peltier Module (TEC1- 12706)
3. Centrifugal Fans (FND-8025-MSC-12D-P)
4. PCB Assembly.
5. SMPS for Circuit Assembly
6. SMPS for PCB.

1. Heat Sink Fans (Model BS10033812U): These fans are used to cool the hot side of the Peltier modules. The hot side of the Peltier modules is first connected to the fins, just outside the fins these fans are used. These fans are DC Brushless fans that use the forced convection air to cool the fins at a fast rate.

2. Peltier Module (TEC1- 12706): These are 12V, 6A Peltier modules when the current flows there are a formation of a hot side and a cold side. The cold side of the Peltier. The module is connected Aluminum Box through which air will be passing. The hot side of the Peltier cooler is connected to the fins which are connected to the Brushless DC fans which are used for cooling purposes. The side with TEC1-12706 is written in the cold side and the opposite side is the hot side.

3. Centrifugal Fans (FND-8025-MSC-12D-P): These fans are used to suck the air inside. As centrifugal fan suction and delivery are at right angles this unique property makes them suitable for this application. The mounting of centrifugal fan is done using a screw.

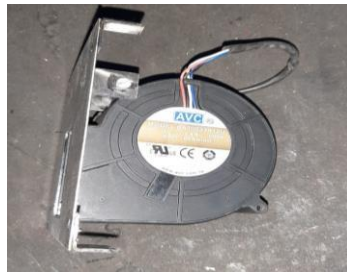


Fig-11: Centrifugal fan mounted on Aluminum Cover

4. PCB Assembly: The PCB Assembly consists of two relays Relay1 and Relay2, ATMEGA128P IC, HC-05 Bluetooth Module, 7805 Regulator, and other electrical components like resistors, capacitor, etc. The PCB assembly is custom designed for this circuit in the project.

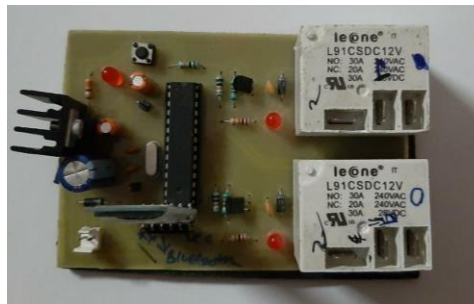


Fig-12: PCB components assembly.

5. SMPS for Circuit Assembly: The SMPS is used for the centrifugal blowers, Peltier module and the axial flow fans. This SMPS is 12V/20A, which converts 230V 50Hz AC power to 12V/20A DC. The selection of the SMPS is done based on the power consumption.

6. SMPS for PCB: This circuit is powered by SMPS which is given AC power supply. SMPS converts the AC power source into DC which is required by the PCB assembly.

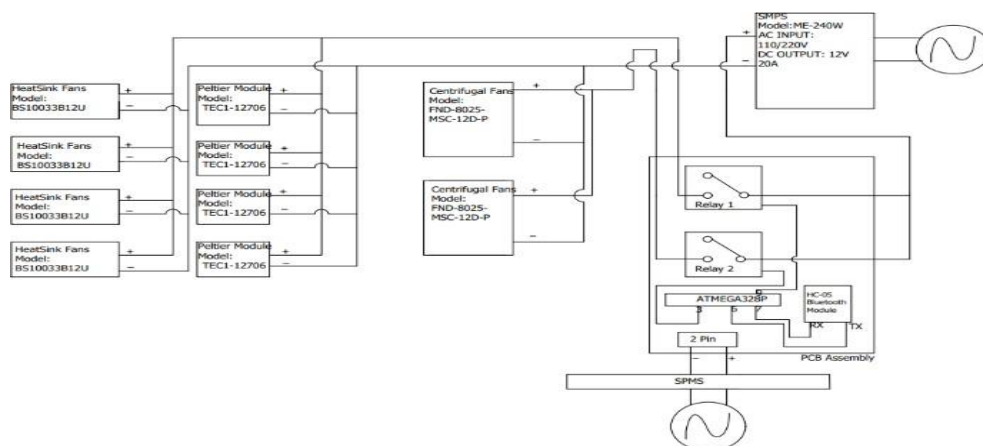


Fig-13: Electrical Circuit Connection Layout.

Heat Sink Fans(Model BS10033812U) are DC-Brushless fans requiring 12V and 0.18A which are used to cool the hot side of the fins of the Peltier module. Four such fans are used with each fan connected to each hot side of the Peltier modules. Peltier Module (TEC-12706) which require maximum 12 V and 6A are used for cooling purpose. All the positive wires of the four Heat Sink Fans and the positive of the four Peltier Modules are connected. This connection is further extended to the N/O of the Relay1. Relay 1 used is L91CSDC12V Relay it supports N/O current up to 30A and N/C current up to 20A. Two Centrifugal fans(FND-8025-MSC-12D-P) are also used to suck the air. The positive of these two centrifugal fans are connected to N/O of Relay 2. Relay 2 used is L91CSDC12V which is same as the Relay1. The negative wires of two centrifugal fans are connected and connected with the negative of all the Heat Sink Fans and the negative of Peltier is connected directly to the negative supply of the SMPS of the circuit assembly. The SMPS is further powered by AC power. The two relays Relay1 and Relay2 are mounted on a PCB assembly. The Relay1 is connected to the ATMEGA128P IC via pin 9 and The Relay2 is connected to the ATMEGA128P IC via pin 3. ATMEGA128P IC is further connected to the Bluetooth module HC-05 TX and RX pins which are the transmission and the receiver pins respectively via pins 7 and 5 respectively. The PCB assembly is powered via two pins where another SMPS is used to convert 230V AC to 12V DC.

The SMPS for circuit Assembly used is 240W SMPS (ME- 240W AC input- 110V/220V DC Output 12V 20A). This SMPS converts the 230V 50Hz current into 12V 20A current which is used for the Heat Sink fans, Peltier cooler fans and Centrifugal fans. The relays used which are Relay1 and Relay2 are namely used for On and Off switches. These On and Off switches are controlled by ATMEGA128P. The ATMEGA128P is connected to the Bluetooth Module HC-05 it is operated via the android app 'Bluetooth controller' in smartphones. The upper button enables the centrifugal fans and they start to operate. The Left button enables the Peltier Modules and the Heat sink fans. The Down button switches the centrifugal fan off and the Right button switches off the Peltier Module and the Heat sink fans.



Fig-14: Bluetooth Controller App

3.7 Working

The ATMEGA128P IC is controlled via the HC-05 Bluetooth Module. The Relays are connected to the ATMEGA128P IC, when the mobile application is operated it transmits the signal to the HC-05 Bluetooth Module. This signal send by HC-05 is sent by ATMEGA128P IC to their respective relays. When the upper

button is pressed the Relay 2 is operated and then it connects the positive wire of SMPS to the N/O where the positive of the Centrifugal Fans are connected and are then switched ON. Similarly, when Down button is pressed the Relay 1 is operated and it connects the positive wire of the SMPS to the N/O where the positive of the Heat Sink Fans and Peltier modules are connected and is then switched ON. When the Down button is pressed the Relay 2 disconnects the positive wire of the SMPS to the N/O thus the centrifugal fans are switched OFF. When the Right button is pressed the Relay 1 disconnects the positive wire of the SMPS to the N/O thus the Heat Sink Fans and the Peltier modules are disconnected.

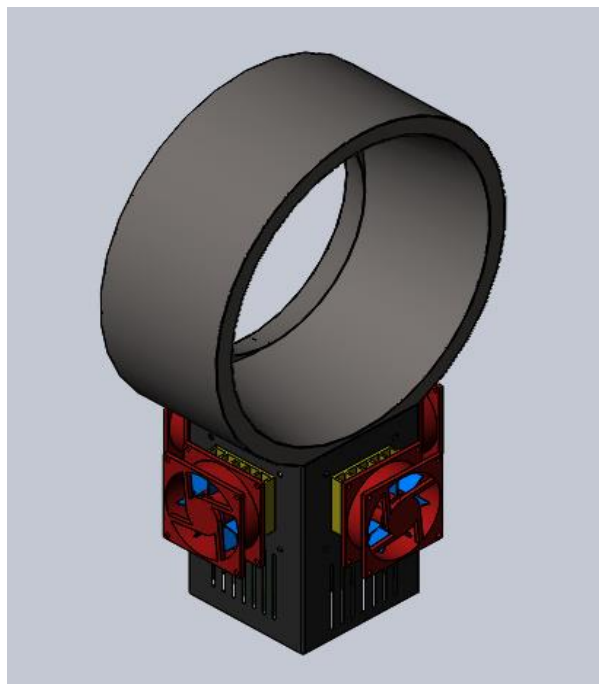


Fig-15: Bladeless fan with a Peltier cooler.

4. Results and Discussion

4.1. Power Calculations and Selection of SMPS.

The power is consumed by the following components in the project.

1. Two Centrifugal Fans.
2. Four Peltier Modules.
3. Four Axial Cooler Fans.
4. One Power Supply to PCB board.

Power Consumed by Centrifugal Fans Model: BA10033B12U

$$V_{\max} = 12V[\text{DC}]$$

$$I_{\max} = 2.4A$$

$$\text{Power} = V_{\max} \times I_{\max}$$

$$= 12 \times 2.4 = 28.8W$$

$$\text{For 2 such fans} = 2 \times 28.8 = 57.6W$$



Power Consumed by Peltier Cooler Fans Model: FND-8025-MS-12D-P

$$V_{max} = 12V \text{ [DC]}$$

$$I_{max} = 0.18A$$

$$\text{Power} = V_{max} \times I_{max}$$

$$= 12 \times 0.18 = 2.16W$$

For 4 Fans,

$$\text{Power} = 4 \times 2.16W = 8.64W$$

Power Consumed by Peltier Cooler Fans

$$I_{max} = 4.4A \text{ [Value taken from datasheet.]}$$

$$V_{max} = 14.4V \text{ [Value taken from datasheet.]}$$

$$T_h = 273 + 30 \text{ [Ambient Atmospheric Temperature.]} = 303K$$

$$\Delta T_{max} = 66K \text{ [Value taken from datasheet.]}$$

$$\alpha_m = V_{max} / I_{max}$$

$$= 14.4 / 303 = 0.047524 / K$$

$$R_m = ((T_h - \Delta T_{max}) / T_h) (V_{max} / I_{max})$$

$$= ((303 - 66) / 303) (14.4 / 6.4) = 1.7599 \Omega$$

$$K_m = ((T_h - \Delta T_{max}) / 2 \Delta T_{max}) (V_{max} I_{max} / T_h)$$

$$= ((303 - 66) / (2(66))) ((14.4 \times 6.4) / 303) = 0.54610 W / K$$

$$P = \alpha_m \times I \times (T_h - T_c) + [(I)^2 \times R_m]$$

$$= (0.047524) \times (6.4) \times (303 - 278) + [(6.4)^2 \times 1.7599] = 79.6889W$$

Total Power from SMPS,

$$\{\text{Power from SMPS}\} = \{\text{Power Consumed by Centrifugal Fan}\}$$

$$+ \{\text{Power consumed by Peltier Cooler Fans}\} + \{\text{Power Consumed by Peltier Modules}\}$$

$$\text{Power} = 57.8 + 8.64 + 318.756 = 385.196W$$

SMPS available are of 360W and 480W, selected SMPS are 360W or 480W for better performance.

4.2. Velocity Measurement.

The velocity of the air coming out of the hoop is measured with the help of an anemometer. The hand-held anemometer is held in front of the hoop from where the air is coming out. At the different locations of the hoop, the velocity is measured. The velocity of air is also measured at 5, 10, 15, 20, 25, 30, 35, 40 cms at four corners of the hoop i.e top corner, right corner, left corner, right corner, bottom corner of the airfoil.

The values are as follows:

Table-2: Variation of velocity at different dimension and distance of the fan.

Distance.(in cms)	Velocity at Top corner. (m/s)	Velocity at Right corner. (m/s)	Velocity at the Bottom corner. (m/s)	Velocity at the Left corner. (m/s)
5	2.4	2.3	1.8	2.3

10	1.8	1.7	1.8	1.7
15	1.6	1.5	1.7	1.5
20	1.6	1.4	1.5	1.4
25	1.3	1.2	1.1	1.2
30	1.4	1.2	1.1	1.4
35	1.2	1.1	1.1	1.1
40	1.1	0.9	0.8	0.9

4.3. Temperature Measurement.

The outlet air temperature for different the ambient atmospheric temperature was noted down. The temperature of the outlet of air was noted down using the LM35 sensor circuit. The Peltier sensor was first turned on for five minutes to reach a steady state. The outlet velocity was then measured. The inlet air entering is assumed to have temperature ambient air temperature T_0 .

Table-3: Outlet temperature of Air for given ambient temperatures.

Ambient Air Temperature.	Inlet Air Temperature = Ambient Air Temperature.	Outlet Air Temperature.
33°C	33°C	29°C
32°C	32°C	29°C
30°C	30°C	28°C
29°C	29°C	27°C

A temperature difference of 30C - 40C is obtained.

5. Conclusion

The following conclusion made from this project:

- This project explains the complete manufacturing of Bladeless fan with TEC along with its assembly.
- The sheet metal manufacturing process of each component is explained in detailed manner.
- The circuit assembly with the electrical components along with its interface is also explained.
- The fan provides air of velocity of magnitude 1.3 m/s up to a distance of 30 cm from the face.
- The fan is successful in lowering the temperature of the intake air up to 40C.
- The fan is compact and delivers the cool breeze without the need for a refrigerant, compressor, expansion device.

Future Scope

- Centrifugal fan with a high mass flow rate if used will suck more amount of air which used with



properly shaped of air can multiply the amount of air sucked in.

- When air moves over the cold chamber there is very less contact time with the cold chamber, due to which there is very little reduction in the temperature of air sucked in, if proper heat exchanger (copper tubes with water as cold fluid) and baffles are used in cold chamber there will be more contact of air which will lead to more cooling.
- If proper permutation and combination of the cross- section of hoop airfoil is made then there will be more air on the outside, the process for which is explained.

REFERENCES

- [1] M. Jafari, H. Afshin, B. Farhaneih, H. Bozorgasareh, "Experimental and Numerical Investigation of 60cm Diameter Bladeless Fan" Article in Journal of Applied Fluid Mechanics · March 2016. ISSN 1735-3572, EISSN 1735-3645.
- [2] Sukmaji Indro Cahyono, Abdul Hapid, Miftahul Anwar, Sunarto Kalek, Kuncoro Dihadjo, Budi Santoso "Computational Fluid Dynamic Simulation on Bladeless Fan As Active Cooling Application" November 2018 DOI:10.1109/ICSEEA.2018.8627098.
- [3] M. Jafari, H. Afshin, B. Farhanieh, A.Sojoudi "Numerical Investigation of Geometric Parameter Effects on the Aerodynamic performance of a Bladeless Fan" March 2017. DOI:10.1016/j.aej.2015.11.001
- [4] Manisha Daiya "Design Study of a Bladeless Fan "Air Multiplier"" Article in IJRTI Volume3, Issue 10.
- [5] Mr. Raju Goodley, Dr. S.C.V Ramana Murty Naidu, Mr. D. Vekant, Mr. D. Jemin Chakravarthy, Mr. K. Kalyan Reddy, Mr. B. Sathish "Fabrication and Performance Study of Thermoelectric Refrigerator" IRJET Volume 7, Issue 7, May 2020. E-ISSN: 2395- 0056 P-ISSN: 2395-0072.
- [6] Poonam V. Gaikwad "Bluetooth Based Smart Automation System Using Android" IJSR, Volume 6, Issue 5, May 2017. ISSN (Online): 2319-7064.